

West Barn, Heath Hill TF11 8RW



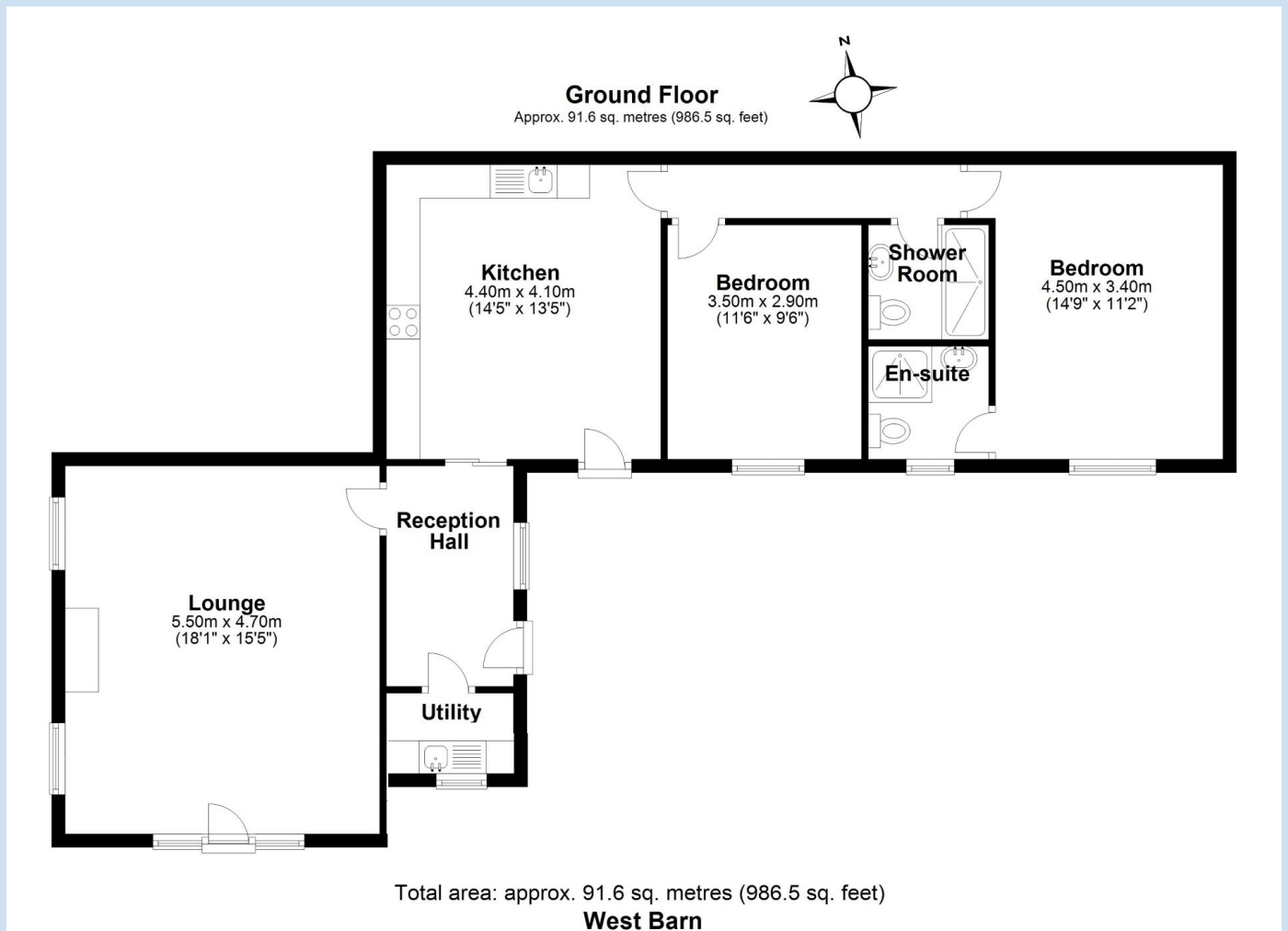
£ 3 9 9, 9 5 0 region

This delightful single storey barn conversion sits within a large plot surrounded by a stunning rural landscape with easy access to the market town of Shifnal, Newport and Telford. The property is presented to a high standard with accommodation that includes reception hallway, large lounge with feature fireplace and exposed beams, well proportioned kitchen/diner, utility room, two double bedrooms (one with ensuite shower room) plus a second shower room. Externally there is gated access to a large gravelled parking area and a beautifully maintained enclosed sunny garden to the rear with patio area for outside dining/relaxation, large lawn with mature shrubs and trees and a useful wooden garden workshop fitted with full electrics.









Tenure Freehold

Council tax Band D

Fixtures & Fittings Where specifically mentioned in these sales particulars are included in the sale price.

N.B Please note, that none of the services, heating systems or any appliances at this property have been tested, therefore no warranty can be given or implied as to their working order. These particulars do not constitute or form a part of any contract. Whilst Harwood Estate Agents and their employees take every care in the preparation of these particulars they hereby state both on behalf of themselves and the vendor that no intending purchaser should rely on any of the statements of representation of fact and the intending purchaser should make his/her own inspection and enquiries in order to satisfy himself/herself of their authenticity and no responsibility is accepted for any error or omission herein.

Details prepared : 7th May 2024